

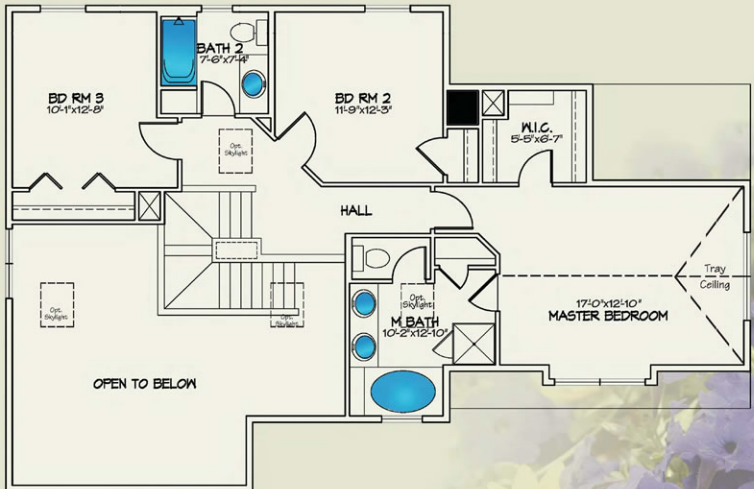
First Floor

The Ashford

3 bedrooms 2½ baths
Approx. 1,954 sq. ft.



Second Floor



These floor plans are for marketing purposes only and may contain elements not included in the model base price. Elevation details, colors, plumbing fixtures, size, locations and room dimensions are approximate and subject to field variation. We reserve the right to make changes in design, terms and products without notice or obligation.
House on slab has a slight different first floor layout. Ask sales representative for details